

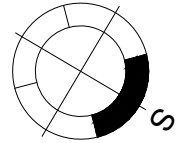
STAMBENI OBJEKAT

Novi Sad, ugao Filipa Višnjića i Belih njiva

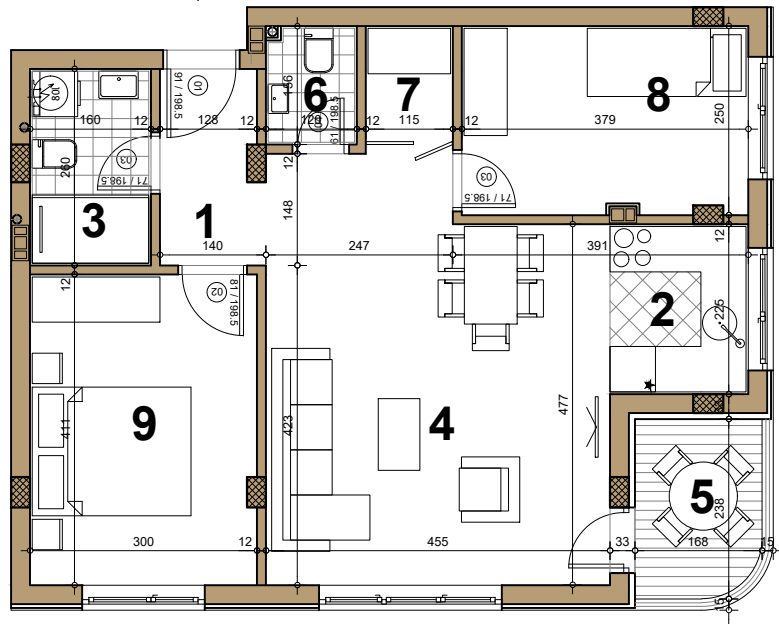
I/II sprat ► STAN A13/A21

TROSOBAN

63.05 m²



A13/A21



A13/A21 - TROSOBAN

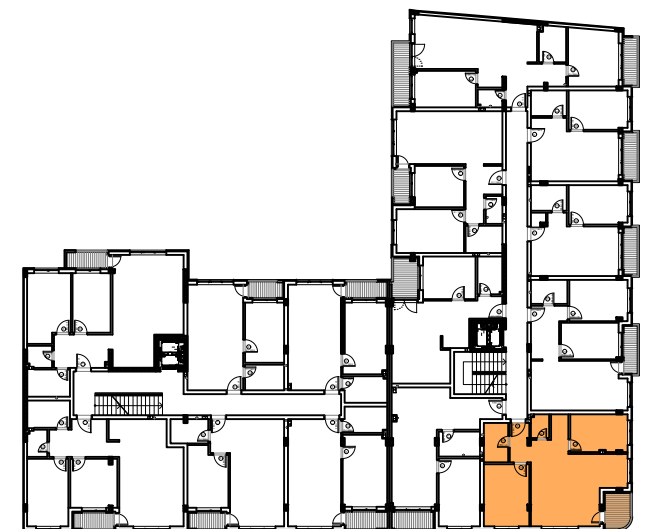
broj	naziv prostorije	obrada poda	površina (m ²)
1	ulaz	parket	3.40
2	kuhinja	ker.pl.	4.11
3	kupatilo	ker.pl.	4.16
4	dnevna soba	parket	24.04
5	terasa	ker.pl.	3.86
6	wc	ker.pl.	1.84
7	ostava	ker.pl.	1.94
8	spavaća soba	parket	9.36
9	spavaća soba	parket	12.29

UKUPNO NETO

65.00 m²

UKUPNO NETO (-3%)

63.05 m²



ulica Belih njiva

ulica Filipa Višnjića