

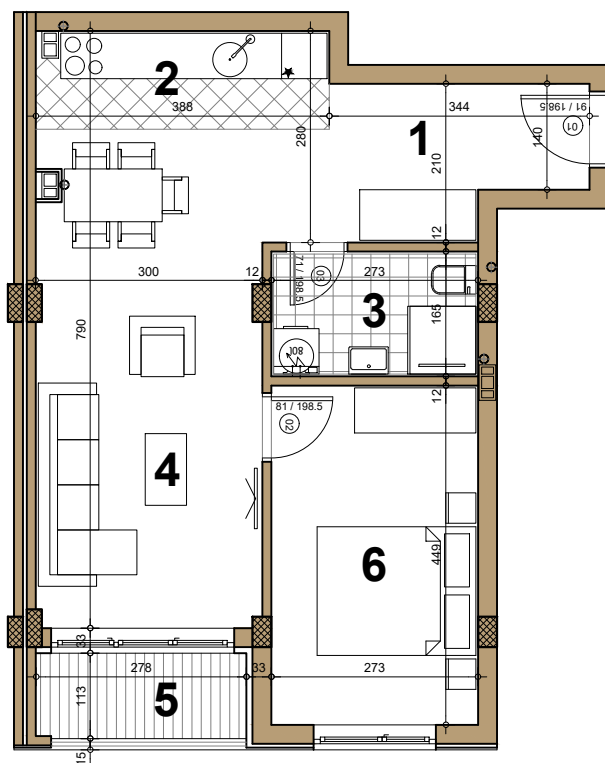
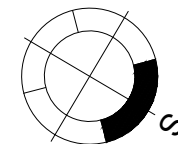
STAMBENI OBJEKAT

Novi Sad, ugao Filipa Višnjića i Belih njiva

I/II sprat ► STAN A14/A22

DVOSOBAN

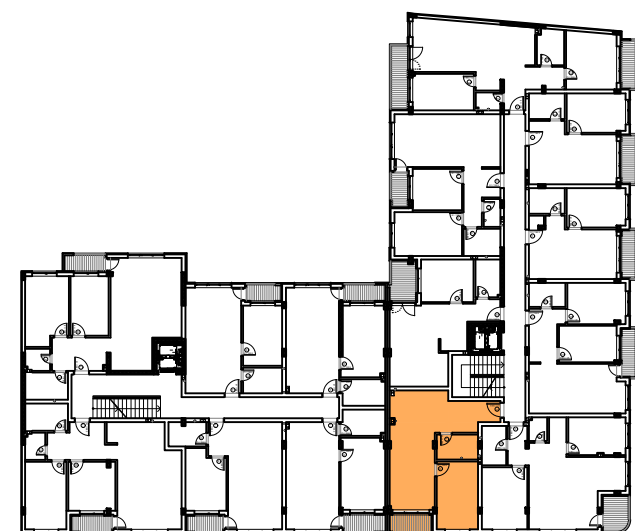
50.46 m²



◀ **A14/A22**

A14/A22 - DVOSOBAN

broj	naziv prostorije	obrada poda	površina (m ²)
1	ulaz	parket	6.19
2	kuhinja	ker.pl.	4.94
3	kupaćilo	ker.pl.	4.51
4	dnevna soba	parket	20.95
5	terasa	ker.pl.	3.15
6	spavaća soba	parket	12.28
UKUPNO NETO			52.02 m²
UKUPNO NETO (-3%)			50.46 m²



ulica Belih njiva

ulica Filipa Višnjića