

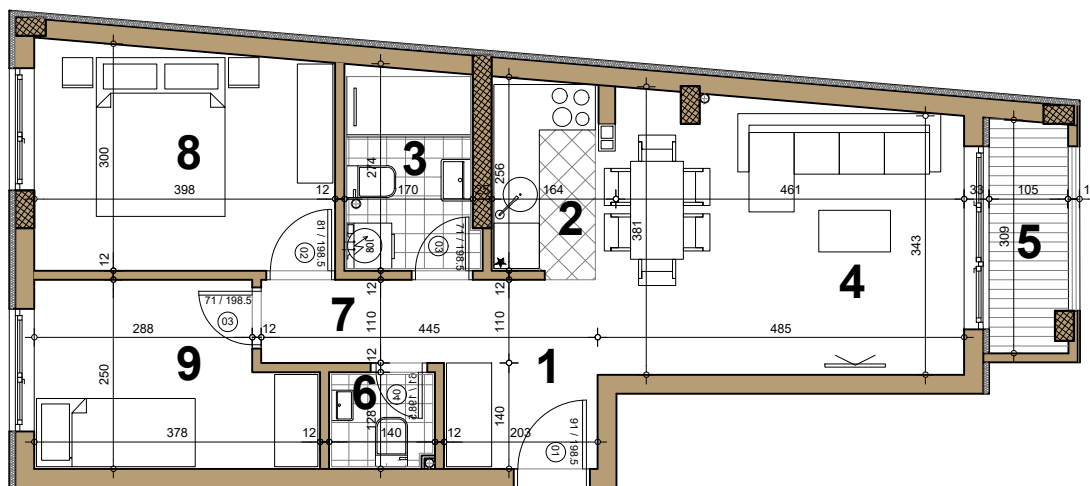
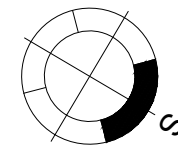
# STAMBENI OBJEKAT

Novi Sad, ugao Filipa Višnjića i Belih njiva

Prizemlje ► STAN A2

TROSOBAN

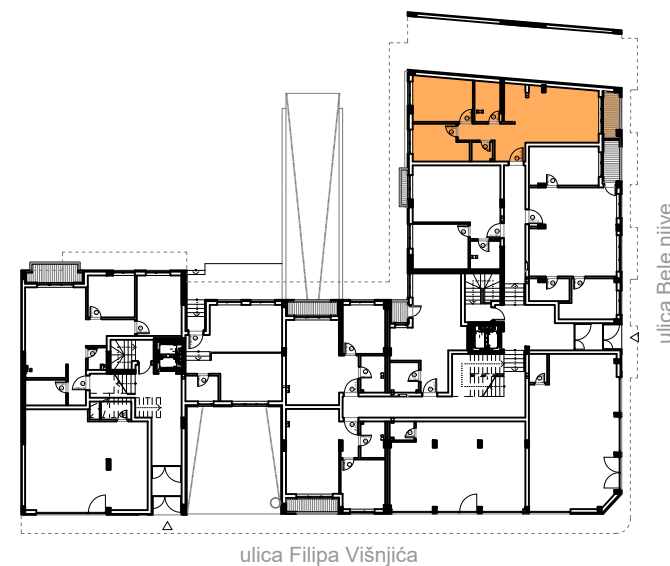
56.48 m<sup>2</sup>



▲  
**A2**

## A2 - TROSOBAN

broj	naziv prostorije	obrada poda	površina (m <sup>2</sup> )
1	ulaz	parket	5.07
2	kuhinja	ker.pl.	3.61
3	kupatilo	ker.pl.	4.61
4	dnevna soba	parket	17.41
5	terasa	ker.pl.	3.15
6	kupatilo	ker.pl.	1.76
7	hodnik	parket	2.66
8	spavaća soba	parket	11.61
9	spavaća soba	parket	8.35
<b>UKUPNO NETO</b>			<b>58.23 m<sup>2</sup></b>
<b>UKUPNO NETO (-3%)</b>			<b>56.48 m<sup>2</sup></b>



ulica Filipa Višnjića

ulica Bele njive