

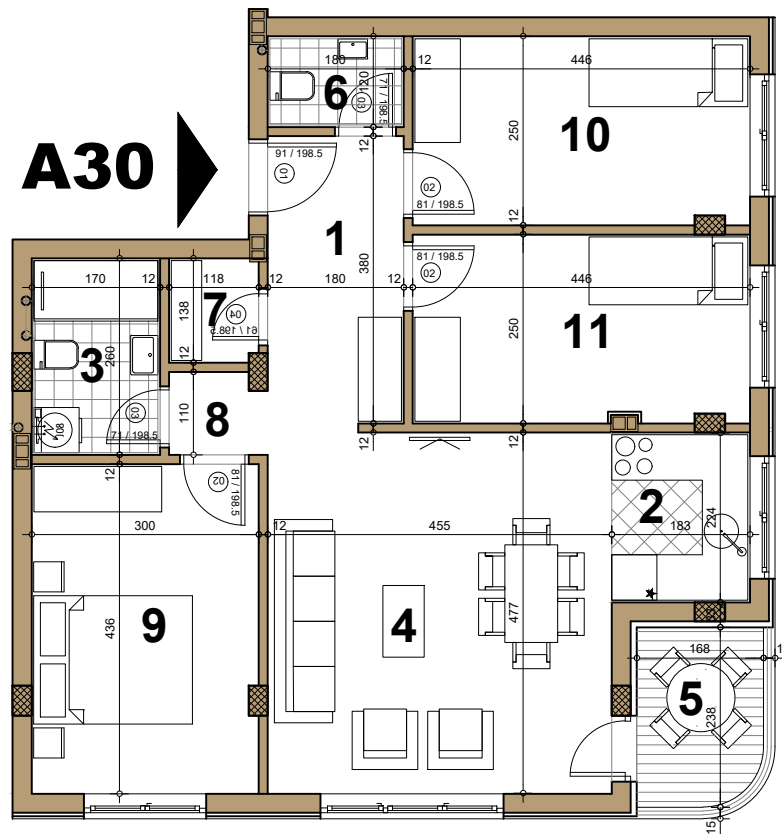
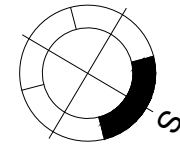
# STAMBENI OBJEKAT

Novi Sad, ugao Filipa Višnjića i Belih njiva

Potkrovlje ► STAN A30

ČETVOROSOBAN

78.97 m<sup>2</sup>



## A30 - ČETVOROSOBAN

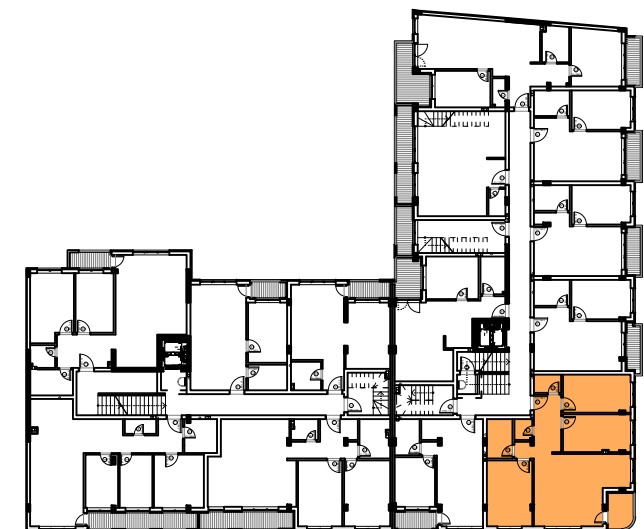
broj	naziv prostorije	obrada poda	površina (m <sup>2</sup> )
1	ulaz	parket	6.98
2	kuhinja	ker.pl.	4.11
3	kupaćilo	ker.pl.	4.42
4	dnevna soba	parket	21.73
5	terasa	ker.pl.	3.86
6	kupaćilo	ker.pl.	2.16
7	ostava	parket	1.61
8	degažman	parket	1.37
9	spavaća soba	parket	13.04
10	spavaća soba	parket	11.10
11	spavaća soba	parket	11.03

UKUPNO NETO

81.41 m<sup>2</sup>

UKUPNO NETO (-3%)

78.97 m<sup>2</sup>



ulica Bele njive

ulica Filipa Višnjića