

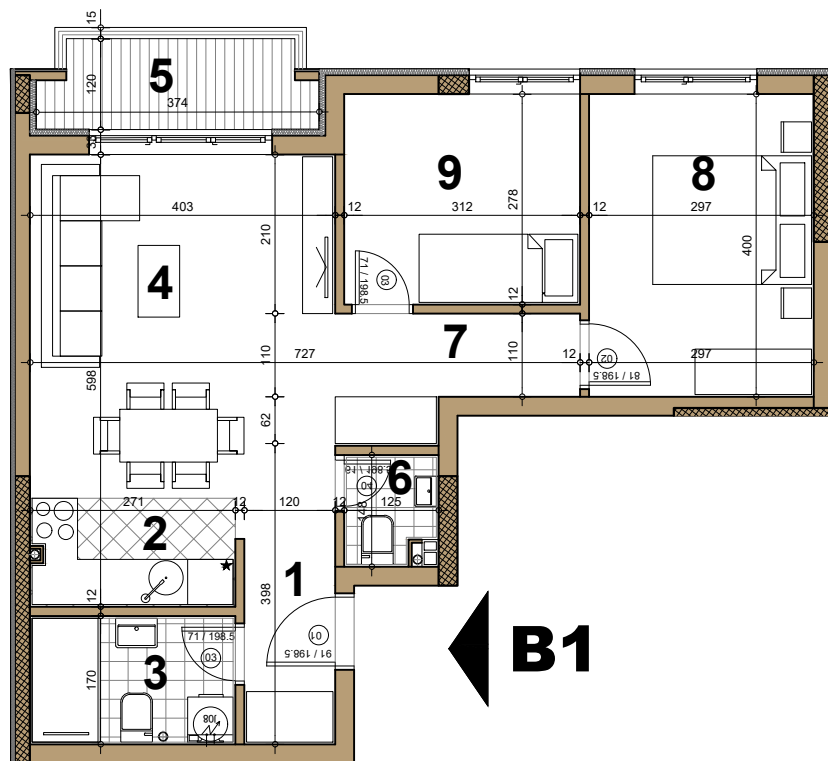
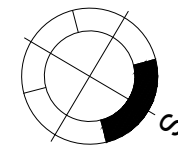
# STAMBENI OBJEKAT

Novi Sad, ugao Filipa Višnjića i Belih njiva

Prizemlje ▶ STAN B1

TROSOBAN

59.82 m<sup>2</sup>



## B1 - TROSOBAN

broj	naziv prostorije	obrada poda	površina (m <sup>2</sup> )
1	ulaz	parket	3.66
2	kuhinja	ker.pl.	3.34
3	kupatilo	ker.pl.	4.62
4	dnevna soba	parket	19.20
5	terasa	ker.pl.	4.10
6	kupatilo	ker.pl.	1.71
7	hodnik	parket	4.45
8	spavaća soba	parket	11.90
9	spavaća soba	parket	8.69
<b>UKUPNO NETO</b>			<b>61.67 m<sup>2</sup></b>
<b>UKUPNO NETO (-3%)</b>			<b>59.82 m<sup>2</sup></b>

