

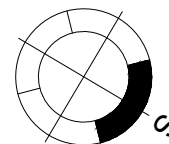
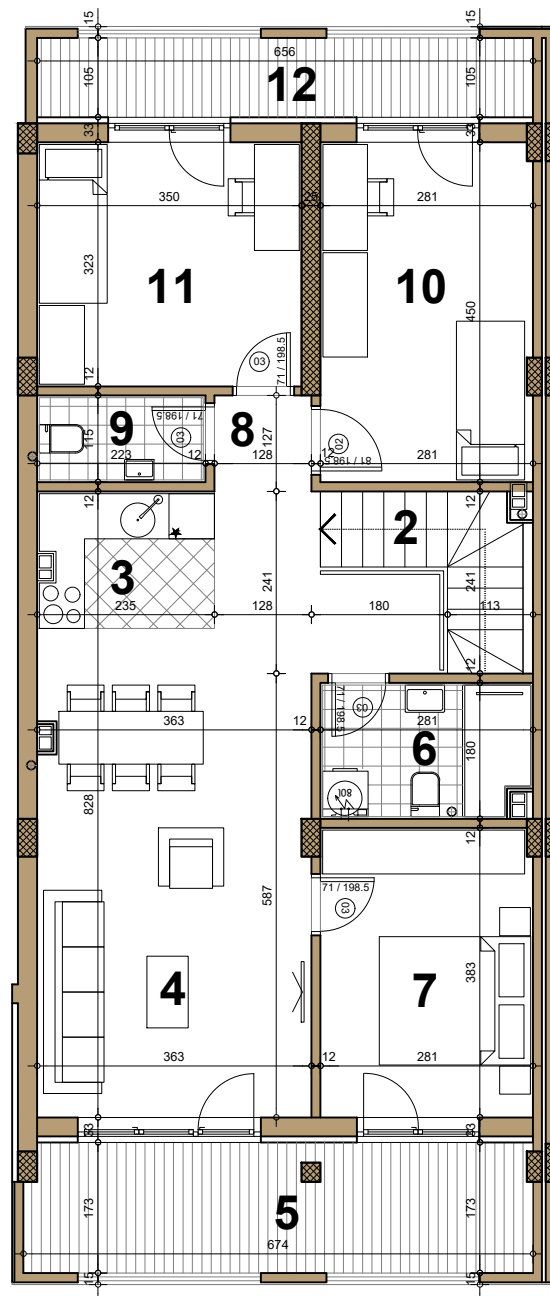
# STAMBENI OBJEKAT

Novi Sad, ugao Filipa Višnjića i Belih njiva

Potkrovlje/dupleks ► STAN B17

ČETVOROSOBAN

100.85 m<sup>2</sup>



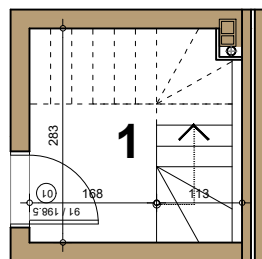
## B17 - ČETVOROSOBAN

broj	naziv prostorije	obrada poda	površina (m <sup>2</sup> )
potkrovlje			
1	ulaz	ker.pl.	5.17
dupleks			
2	hodnik sa stepeništem	parket	6.64
3	kuhinja	ker.pl.	4.89
4	dnevna soba	parket	22.45
5	terasa	ker.pl.	11.26
6	kupaćilo	ker.pl.	4.92
7	spavaća soba	parket	10.75
8	degažman	parket	4.54
9	wc	ker.pl.	2.56
10	spavaća soba	parket	12.60
11	spavaća soba	parket	11.30
12	terasa	ker.pl.	6.89

**UKUPNO NETO** 103.97 m<sup>2</sup>

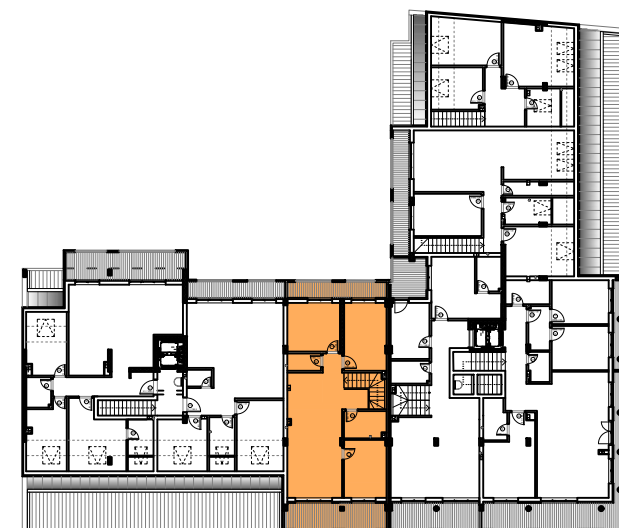
**UKUPNO NETO (-3%)** 100.85 m<sup>2</sup>

**B17** ►



osnova potkrovlja

osnova dupleksa



ulica Filipa Višnjića

ulica Bele njive