

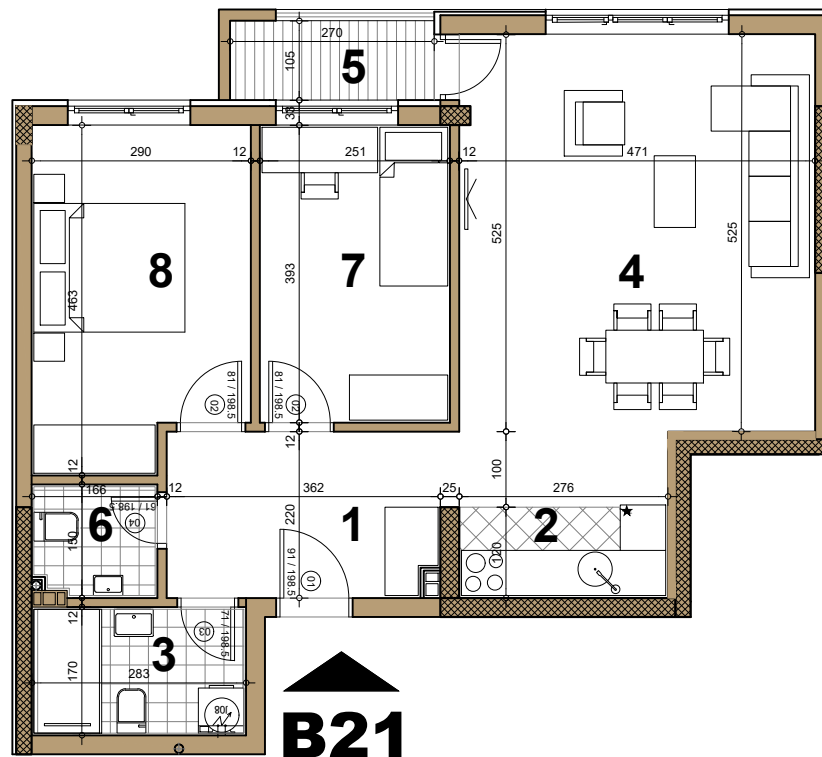
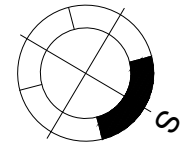
STAMBENI OBJEKAT

Novi Sad, ugao Filipa Višnjića i Belih njiva

Potkrovlje ► STAN B21

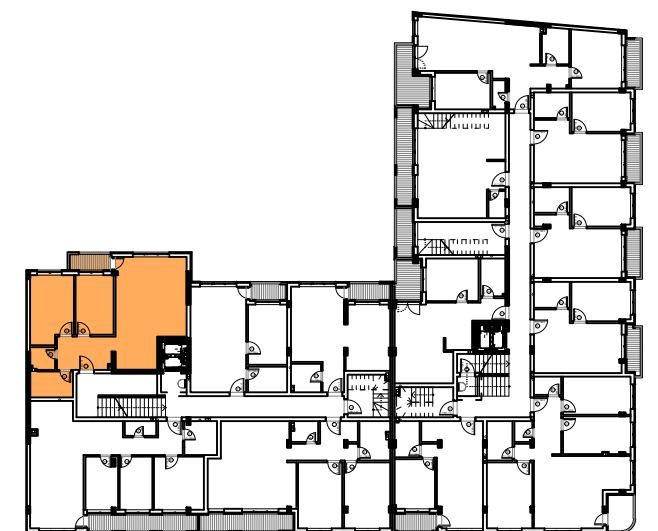
TROSOBAN

69.27 m²



B21 - TROSOBAN

broj	naziv prostorije	obrada poda	površina (m ²)
1	ulaz	parket	8.11
2	kuhinja	ker.pl.	3.31
3	kupatilo	ker.pl.	4.74
4	dnevna soba	parket	27.50
5	terasa	ker.pl.	2.84
6	kupatilo	ker.pl.	2.42
7	spavaća soba	parket	9.91
8	spavaća soba	parket	12.58
UKUPNO NETO			71.41 m²
UKUPNO NETO (-3%)			69.27 m²



ulica Filipa Višnjića

ulica Bele njive